

A Tradition of Excellence

Grafton Public School Newsletter



Locked Bag 9024 Grafton 2460 PHONE: Primary - 6642 1000 Infants - 6642 2286
Email: grafton-p.school@det.nsw.edu.au

Term Calendar - [Click Here](#)

Term 4 Week 4: Friday 4th November 2022

School Website - [Click Here](#)

From the Relieving Principal's Desk

Happy Happy Jacaranda. It's such a lovely time of the year to be surrounded by purple throughout our town.

Thank you to our students and staff who attended the Bendigo Bank March of Youth and Banner Competition last Saturday morning. Our icon banner looked fantastic, and I would like to thank Miss Jody, Miss Ann and the students for creating the banner. If you would like to see the banner, it is displayed in the link at Jacca HQ. This week we showcased our guitar group, and junior and senior choirs and dance groups at the Valley School performance in Market Square.

The school executive team are currently considering staffing and class models for 2023. We appreciate support with this process and acknowledge that classes can only be formed based on the enrolment information provided to the school by parents and carers. Forming classes in schools is a complex process based on the Department of Education Policy. If your situation is changing for 2023, for example, moving out of the Grafton area, could you please let the school know ASAP so this can be factored in.

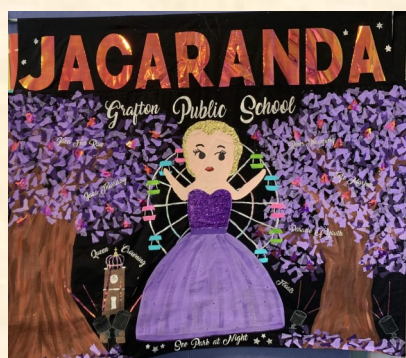
Eating breakfast is important for everyone, but especially for children. After going without food for 8 to 10 hours during sleep, breakfast gives our bodies the fuel it needs for the day. Eating breakfast helps jump start metabolism for the day. Kids who don't eat breakfast will tend to feel an energy drain by mid-morning. In general, kids who skip breakfast will feel tired, restless and irritable. Eating breakfast has been shown to help attention span, concentration and memory which is all important for learning. On our Infants campus, we have Breakfast Club on a Wednesday and Friday morning. A big thank you to 'The Hub' at the Baptist Church for supplying the Primary campus with breakfast on Friday mornings. This started today.

Students who travel by bus and will be in Year 2 (2023) or students who have changed their address, will need to renew or update their bus pass information. See our Community Notices section for further information.

Students who change address, school campus, have repeated a year or received an export notification from Transport for NSW for their school travel entitlement, should renew or update their details before the end of the Term 4. This will ensure that schools can endorse applications, and entitlements remain valid for the start of 2023 school year.

Have a terrific fortnight,

Mrs Fletcher
Relieving Principal

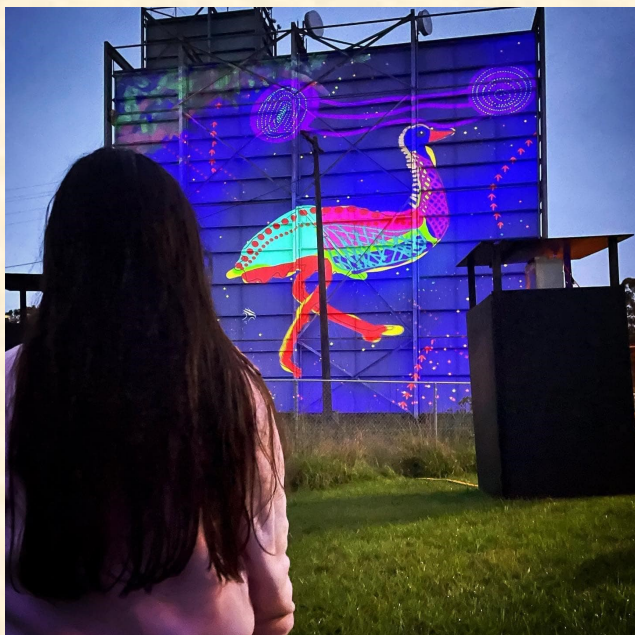


Maisie's amazing artwork on display

We are super proud of Maisie Monaghan in Year 1 for having two of her amazing artworks illuminating the Sunshine Sugar building in South Grafton as part of the Building Bridges project.

Maisie joins other local First Nations artists Kahlua Charlton, Gareth Charlton, Aneika Kapeen and Deborah Taylor who represent the three local nations Yaegl, Gumbaynggirr and Bundjalung.

It is such an amazing display celebrating the Coastal Emu and can be seen every night until November 6. Well done Maisie!



Gala Christmas Concert



Grafton Public School Gala Concert Wednesday 7th December 2022 6.30pm Saraton Theatre



An evening of fun and frivolity to showcase the talents of all of our students and to celebrate another great year at GPS

Tickets will go on sale on Thursday 17th November and will be available from the Saraton Theatre.

Please visit the Saraton or purchase tickets online.

<http://www.saraton.com>

Adults \$12

Students/Concessions \$8

Family ticket \$40 (2 adults and 3 students)

Families do not need to buy a ticket for students performing

Come dressed in your best Christmas outfit as there will be prizes for best dressed. The P & C Christmas Raffle will be drawn on the night. Please bring along some spare change to help spread some Christmas Spirit.

Please arrive at 6pm for pre-concert entertainment and be ready for a 6.30pm start.



Valley's Schools Got Talent

Well done to our guitar players, singers and dancers who performed at Market Square on Monday as part of the Jacaranda Schools Day event.

It was wonderful to see the students on stage. A big shout out to all the other performers from different schools who were also terrific on stage.

Great effort everyone!!



Newcastle Permanent Mathematics Competition

46 students in Stage 3 participated in the Newcastle Permanent Mathematics Competition this year. Our school received certificates in the following levels. 14 Merits, 10 Distinctions and 2 High Distinctions, which were also top in the Clarence Valley for Year 5 and 6. A fine achievement from our students at GPS!



Green Level Rewards

Positive Behaviour for Learning (PBL) provides a framework for our school to support the wellbeing of every student. It is an evidence based, positive, social, student focused approach to behaviour that involves the whole school community. It includes creating, teaching and rewarding expected and pro-social behaviours that involves everyone, everywhere and every time. Our Green Level Rewards have been set for the term and the students are excited. Let's hope many of our students can reach 40 points this term and have the choice of what reward they would like to participate in.

GREEN LEVEL REWARD

TERM 4 2022 K-2

- 39-40 points: Movies at the Saraton
- 38-34 points: Christmas Craft and Cooking
- 33-26 points: Make and Create Recycling Session
- Less than 25 points: Board games

HOW MANY POINTS WILL YOU GET?



Any student who receives 40 STAR points in one term will go into a draw to have a lunch party with Ms McDonagh



GREEN LEVEL REWARD

TERM 4 2022 YEARS 3-6

- 39-40 points: Movies at the Saraton
- 38-34 points: Christmas Craft and Cooking
- 33-26 points: Minecraft / Coding
- Less than 25 points: Gardening

HOW MANY POINTS WILL YOU GET?



Any student who receives 40 STAR points in one term will go into a draw to have a lunch party with Ms McDonagh



P & C Family Portrait Fundraiser

\$20 FAMILY PORTRAIT FUNDRAISING DAY

Grafton Public School
11th & 12th of November



FOR YOUR DONATION YOU RECEIVE:

- 10 X 13" PORTRAIT IN AUSTRALIAN WOOD FRAME
- SITTING FEE INCLUDING 4 POSES WITH THE OPTION TO PURCHASE HUGE DISCOUNTED PACKAGES
- PROFESSIONAL PHOTOGRAPHER BOOKED

TO MAKE A BOOKING CONTACT:

Book online
<https://www.trybooking.com/CCMNX>

Or use the QR code above

Conditions:

- * Limit one Voucher per Person/Family.
- * An adult family member appearing in the fundraiser portrait must be present to collect and view or the offer is void.
- * No refund for failure to keep your appointment.

Visit Our Facebook Page: Dee Beez Photography
www.DeeBeezPhotography.com.au



Calendar

WHAT'S COMING UP...

Nov 8 – P & C Meeting 6pm

Nov 10 – Year 2 Excursion to Ten Pin Bowling & Jacaranda Park

Nov 10 – Kinder Kritters - Full Day - 9.30am to 2.30pm

Nov 10 – Year 1 Springloaded Excursion

Nov 11 & 12 – P & C Family Portrait Fundraiser

Nov 16 – P & C Disco

Nov 17 – Kinder Kritters - Full Day - 9.30am to 2.30pm

Nov 18, 19 & 20 – P & C Mums Retreat - Gold Coast

Nov 21 – GHS Combined Schools Orientation Day - Year 6

Nov 21 – Year 2 Transition Week

Is it time for you to update your family photos???

Are you looking for something to give grandparents for Christmas?? Here is your opportunity....

Book a spot for this P and C Fundraiser next weekend 11th and 12th November. We have used this photographer before and she is brilliant!! For just \$20 you receive a framed 10 x 13" portrait. You can pick either a studio setting or outdoors.

Only a few spots left!!!!

Disco



Grafton Public School P and C invites students to a.....

Rainbow Disco
Wednesday 16th November 2022
School Hall

Infants (K-2) are in school hours 1.30pm to 2.30pm
Years 3-4 4.45pm to 5.45pm
Years 5-6 6pm to 7pm
Admission \$2

Sausage sizzle, slushies and lollies available for the evening discos, along with some fun activities and glow sticks for sale.

Save the date-more details to come.

Yearbooks

A reminder that the Grafton Public School **Yearbook order forms are due back by 10 November**. No orders will be accepted after this date, as this is the cut off day for printing. The cost of the book will be \$25 each and payments can be made through our online payment portal, with cash or card to the front office or by utilising Flood Funding.

Nov 29 – SGHS Year 6 to 7 - Transition Day

Dec 1 – Badge ceremonies both campuses

Dec 5 - Rehearsal Day - Saraton Theatre

Dec 7 - Christmas Gala Concert at the Saraton

Dec 8 - Presentation Day

Dec 12 - Green Level Rewards - Movies and other activities

Dec 14 - Reports handed out to students

Dec 15 - Year 6 Farewell

Dec 16 - Year 6 - Big Banana Waterpark

Dec 16 - Last day of Term for students



JOIN THE FUN!

Grafton Public School after School AFL Auskick Centre

THURSDAYS from 17th November – 8th December

On School Grounds 2.45pm – 3.45pm (Supervision by AFL staff from home time bell)

The cost of \$50 includes a weekly program for 4 weeks of fun games and skills plus an AFL pack (including a football, footy cards, a Fidget Spinner and more)

RESERVE YOUR SPOT BY REGISTERING & PAYING ONLINE – SCAN THIS QR CODE TO START



SCAN ME

AFL Development Lead Matt Crawley 0431 877 173 or email matthew.crawley@afl.com.au

play.afl/auskick

Transport for NSW



School Travel

Term 4 2022

2023 school travel applications are now open

Applications for student travel in 2023 open from **Monday 10 October 2022**.

Students who need a School Opal card or travel pass for 2023 can [apply](#) now. A new application will need to be submitted if they are applying for the first time, or if they are requesting an additional travel entitlement as a result of a new shared parental responsibility situation (e.g. joint custody).

Students who change address, school, campus location, have repeated a year or received an expiry notification from Transport for NSW for their school travel entitlement should [renew or update](#) their details before **the end of term 4**. This will ensure that schools can endorse applications, and entitlements remain valid for the start of the 2023 school year. School Opal card holders will have the changes applied to their existing card.

If a student's distance eligibility has changed based on their grade (i.e. grade two to grade three), the system will automatically update their entitlement if they meet the new criteria. If they do not meet the new [eligibility criteria](#), we will send an expiry notification via email.

Students who have an entitlement approved under a medical condition that is due to expire will receive a notification advising them to re-apply.

[Term Bus Pass](#) holders will receive a notification to re-apply.

Students in the Opal network applying for an Opal card (including a Term Bus Pass) for the first time will receive their Student Opal card at their nominated postal address. Cards will be mailed out from January 2023.

Students living in rural and regional (R&R) areas should receive their travel pass at the start of the new school year from their nominated transport operator. It may come via the school or be sent directly to them at home. **Note:** some R&R operators do not issue travel passes.

Students/parents should confirm with their nominated operator if they do not receive a pass.

Travel from Term 1 2023

We ask that parents plan ahead and make sure their child knows which service/s to use and has a valid ticket to travel; either a School Opal card or Child/Youth Opal card (within Greater Sydney) or a School Travel Pass (outside Greater Sydney), from the start of the school year.

Applications for 2023 School Student Transport Scheme (SSTS) travel open at the start of Term 4 2022, so parents/students can [apply](#) or [update](#) details early and be ready for the start of the new school year.

Most students using the Opal network will not need a new Opal card and can continue travelling on their existing card each year.

The start of the year is a busy period for local transport operators, and students travelling without a valid ticket make service planning and operations difficult.

We recognise that for some families last minute changes to school enrolments mean they may not have a School Opal card or Travel Pass for the start of term. In the Opal network, we strongly encourage these families to have their children travel with a Child/Youth Opal card until they receive their valid School Opal card. If outside Greater Sydney, parents should contact their [local bus operator](#) to discuss their travel needs.

Bus operators are flexible and understanding, particularly at the start of the school year, and will ensure students can travel safely to and from school. But to best support our operators we encourage all students to have a valid ticket, as early as possible, from the start of the school year.

Students using School Opal cards are also reminded that they must tap on and tap off in line with the [Student code of conduct](#) and [Opal terms of use](#).



Further information can be found at transportnsw.info/travel-info/using-public-transport/school-travel

Enquiries can be submitted at transportnsw.info/contact-us/feedback/passes-concessions-feedback



IMPORTANT INFORMATION

Entry Forms: Available at Ferry Park Gallery, Maclean

Entry Fees: Open \$12.00; Youth (under 16) \$7.00
Both include 8x8 canvas

Entries Close: 4.00 pm Friday, 17th March, 2023

Opening and Awards: Friday 31st March, 2023 (Open)
Saturday 1st April, 2023 (Juniors)

Contact: Jean: 0407378982
Pam: 0417815410
8x8@ferrypark.net

